

# PRESETTERS

## ROCK SOLID PRECISION

### LYNDEX-NIKKEN



## THERMAL STABILITY COUPLED WITH HIGH PRECISION

All Elbo Controllii Nikken presetters by Lyndex-Nikken use precision ground granite for the base and column, providing the utmost thermal stability, making them ideal for the work shop environment. This combination provides the highest level of repeatability and reproducibility, making Elbo Controllii Nikken presetters ideal for most tool measuring and inspecting applications.

All presetter models utilize interchangeable spindles (CAT, BT, HSK, Polygonal Taper, etc.) thereby eliminating the need for adapters which introduce additional error. All units also come with fifty of the most common post processors for today's CNC controls.

Receive free software updates for the model life

## BENCH TOP MODELS

### E236+

#### FUNCTIONAL YET SIMPLE TECHNOLOGY

- Measurable Range:  
X-Axis: 10.23" (Diameter)  
Z-Axis: 14.17" (Length)
- 7" TFT vertical touch screen
- 20x camera magnification
- Measurement capability by full screen auto-targeting



### E3 SERIES

MODELS: E346+, E346V+, E356+

#### INNOVATIVE DESIGN, RELIABLE CONSTRUCTION AND VERSATILE FUNCTIONS

- Measurable Range:  
X-Axis: 14.17" (Diameter)  
Z-Axis: 18.11" (Length)  
Z-Axis: 22.04" (Length) (Model E356+ only)
- 15" TFT vertical touch screen
- Inspection mode to verify condition of cutting tools
- Micro adjustments in X and Z (40 millionths of an inch resolution)
- Vacuum spindle clamping (Model E346V+ only)
- 25x camera magnification



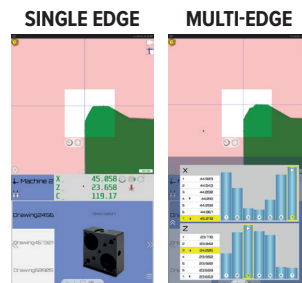
### E346BA *The real strength is simplicity. Measure tools with no operator intervention.*

#### SINGLE AND MULTI-EDGE MEASUREMENT ACQUISITION CYCLE

E346BA allows you to carry out the multi-cutting acquisition cycle, or rather the automatic recognition and measurement of each single cutting edge detected during the complete rotation of the spindle.

Measure your tool in automatic mode. Quick and simple!

- Measurable Range:  
X-Axis: 14.17" (Diameter)  
Z-Axis: 18.11" (Length)
- 15" TFT vertical touch screen
- Inspection mode to verify condition of cutting tools
- Micro adjustments in X and Z (40 millionths of an inch resolution)
- 25x camera magnification



# E46B SERIES

*A fusion of superior construction and innovative technology*



**E46B**



**E46BA**



**E46BP**

## STANDARD FEATURES (E46B MODEL)

- Measurable Range:  
X-Axis: 15.74" (Diameter)  
Z-Axis: 23.62" (Length)
- 18X magnification with 4x digital zoom
- Pneumatic spindle brake
- 1  $\mu$ m camera system resolution
- Import DXF files and create tool overlay
- Adjustable area of interest
- Vertical TFT 15.6" full HD touch screen monitor
- Pneumatic axis movement unlock
- Motorized mechanical spindle clamping
- Tool inspection function

### **E46BA FEATURES**

*(In addition to the standard features)*

- Spindle Identification System (SP-ID)
- C axis readout
- Automatic spindle rotation and tool edge measurement

### **E46BP FEATURES**

*(In addition to the standard & E46BA features)*

- Motorized X, Z and C axis
- Motorized fine adjustment
- Adjustable area of interest
- Presetter automation software for tool presetting (1 step)
- Keyboard and mouse

# E46C SERIES

Measuring complexity meets  
simplicity of use



**E46C**



**E46CA**



**E46CX**

## STANDARD FEATURES (E46C MODEL)

- Measurable Range:  
X-Axis: 15.74" (Diameter)  
Z-Axis: 23.62" (Length)
- 25X magnification with 4x digital zoom
- Manual DXF acquisition of cutting tool profile
- WiFi connection
- Vertical TFT 21.5" full HD touch screen monitor
- Pneumatic axis movement unlock
- Motorized mechanical spindle clamping
- Adjustable area of interest
- Spindle Identification System (SP-ID)
- Tool inspection function
- Pneumatic spindle brake
- Keyboard and mouse

### **E46CA FEATURES**

*(In addition to the standard features)*

- Spindle Identification System (SP-ID)
- Automatic spindle rotation and tool edge measurement
- Automatic electronic index
- Automatic DXF acquisition of cutting tool profile

### **E46CX FEATURES**

*(In addition to the standard & E46CA features)*

- Motorized X, Z and C axis
- Motorized fine adjustment
- Presetter automation software for tool presetting and multi-step geometry check (Full CN)

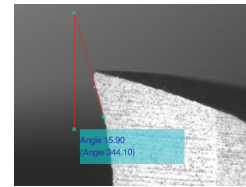
# E46LTWA *Tool makers' best friend*



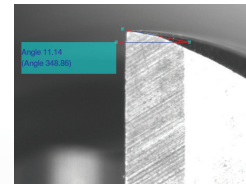
## FEATURES

- **Measurable Range:**  
X-Axis: 12.59" (Diameter)  
Z-Axis: 23.62" (Length)
- 3 camera system for tool inspection (front, top and side)  
Main camera: Tool measurement (diascopic) and cutting-edge inspection (episcopic) bi-telecentric lens. Magnification 26X, digital zoom 2x and 4x available.  
Second/Third camera: Cutting-edge inspection (episcopic) with on screen measurement bi-telecentric lens. Opportunity to view the tool from the top (front) or from the side. Thanks to the rotating support by 90 degrees, the camera can be removed from above not to obstruct the measurement operations. Magnification 60X, digital zoom 2x and 4x available.
- Automatic DXF acquisition of cutting tool profile
- Automatic spindle rotation and tool edge measurement
- Motorized mechanical spindle clamping
- 21.5" vertical touch screen
- Spindle Identification System (SP-ID)

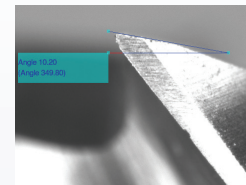
## CONTROL FEATURES



Cylindrical cutter with 3 cutting edges, diameter 10mm.  
Top view: rake angle determines the performance of tool's working conditions.



Cylindrical cutter with 4 cutting edges, diameter 6mm.  
Top view: checking back rake angles (1° and 2°), required to guarantee finish cutting without vibrations affecting the material being processed.



Cylindrical cutter with 4 cutting edges, diameter 6mm.  
Side view: measure the helix angle and rake angle, important to determinate to suit the type of application and the type of material being processed.

# E68 SERIES *The first and only optical scale in the world that uses natural granite, ensuring a precision and repeatability never seen before (patented).*

## STANDARD FEATURES

- Measurable Range:  
X-Axis: 23.62" (Diameter)  
Z-Axis: 31.49" (Length)
- Optional:  
X-Axis: 31.49" (Diameter)  
Z-Axis: 39.37" (Length)
- Motorized mechanical spindle clamping
- Tool inspection function
- Motorized X, Z and C axis
- Spindle Identification System (SP-ID)

Pictured E68LA



## E68B FEATURES

*(In addition to the common features)*

- Vertical TFT 15" full HD touch screen monitor

## E68BA FEATURES

*(In addition to the common features)*

- Vertical TFT 15" full HD touch screen monitor
- Automatic spindle rotation and tool edge measurement

## E68L FEATURES

*(In addition to the common features)*

- Vertical TFT 22" full HD touch screen monitor
- 32X magnification with 4x digital zoom
- On-screen manual measure with axes for radius and angle using user selected points

## E68LA FEATURES

*(In addition to the common features)*

- Vertical TFT 22" full HD touch screen monitor
- 32X magnification with 4x digital zoom
- Automatic spindle rotation and tool edge measurement
- Motorized X, Z and C axis
- Elbo Controlli NIKKEN IS (Integrated Solution) twin screen option available
- Available with optional M.U.S.T. (Measurement User Support Technology) Multi-step measurement. (Full CNC)



SCAN THE QR CODE TO VIEW OUR COMPLETE PRESETTER LINEUP